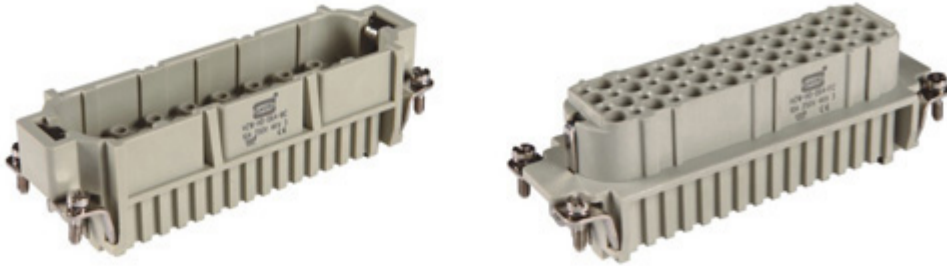


HD

Technical characteristics

HD



Current carrying capacity

The current carrying is limited by maximum temperature of materials for inserts and contacts including terminals

DIN EN 60512-5
Control and test procedures according to DIN EN 60512-5

Specifications

DIN EN 60 664
DIN EN 61 984

Inserts

Number of contacts: 7, 15, 25, 40, 50, 64, 80, 128, 50(2x25), 80(2x40), 128(2x64)+PE

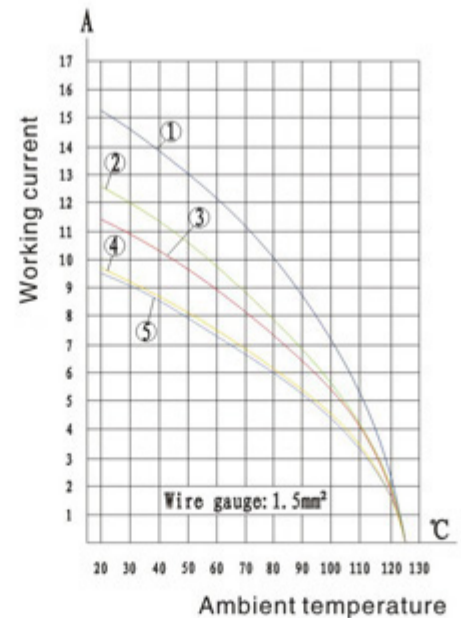
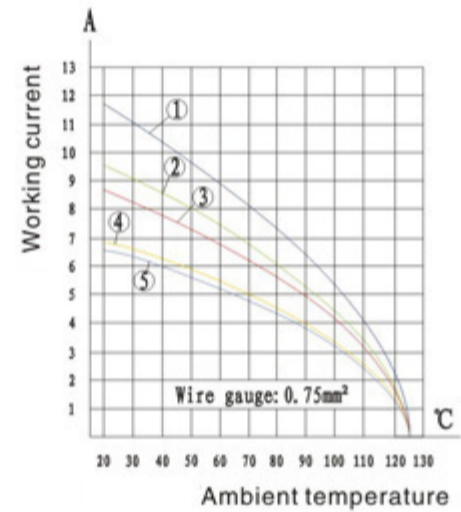
Working current	10 A	250 V	4 KV	3
See current carrying capacity				
Working voltage				
Rated impulse voltage				
Pollution degree				

Pollution degree 2 also	10 A 230/400 V 4 KV 2
Insulation resistance	$\geq 10^{10} \Omega$
Material	Polycarbonate
Flammability acc.to(UL94)	VO
Limiting temperatures	-40°C ~ +125°C
Mechanical working life(mating cycles)	≥ 500
Working voltage acc.to UL/CSA	600V

Contacts

Material	copper alloy
Surface	Gold plated Silver plated
Contact resistance	$\leq 3m\Omega$
Terminal	Crimp terminal
Wire gauge	0.14-2.5mm ² (AWG26-14)

HZW-HD-008(Technical characteristics)	
Number of contacts	8
Working current	10A
Working Voltage	-50V/ -120V
Working voltage acc.to UL/CSA	50V



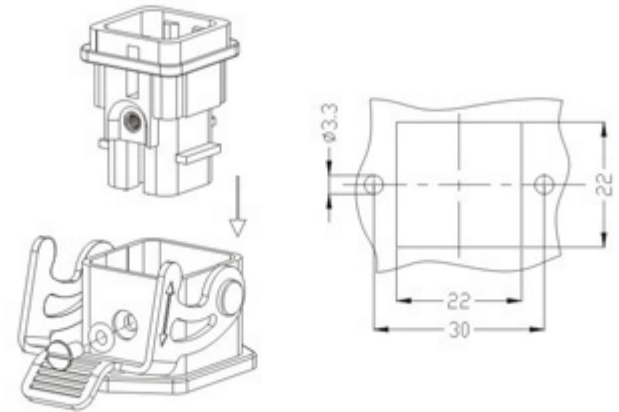
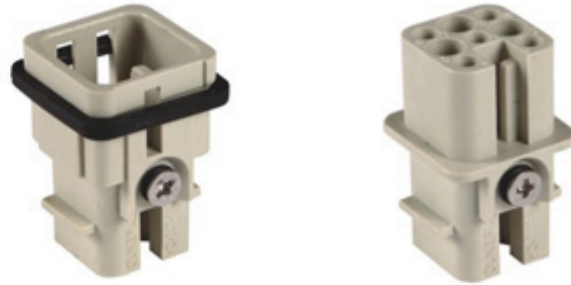
- 1 HZW-HD-007 4 HZW-HD-040
- 2 HZW-HD-015 5 HZW-HD-064
- 3 HZW-HD-025

Hzw-HD

Insert 250V 10A

Number of contacts

7 +



TYPE
Part number
Hoods/Housings

HZW-HD-007-MC
61 204 007 401
Size HZW-H3A

HZW-HD-007-FC
61 204 007 402
Size HZW-H3A

Mounting example

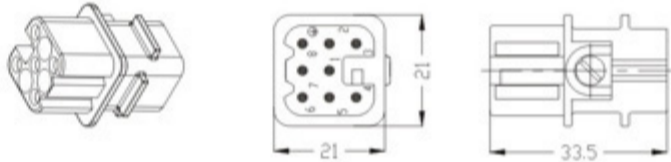
Panel cut out

Drawing (Dimensions in mm)

Male insert (MC)



Female insert (FC)



Crimp contacts	Wire gauge	D	Stripping length
Gold plated	0.14-0.37mm ²	AWG 26-22	0.90mm
	0.5mm ²	AWG 20	1.10mm
	0.75mm ²	AWG 18	1.30mm
Silver plated	1.0mm ²	AWG 18	1.45mm
	1.5mm ²	AWG 16	1.75mm
	2.5mm ²	AWG 14	2.25mm

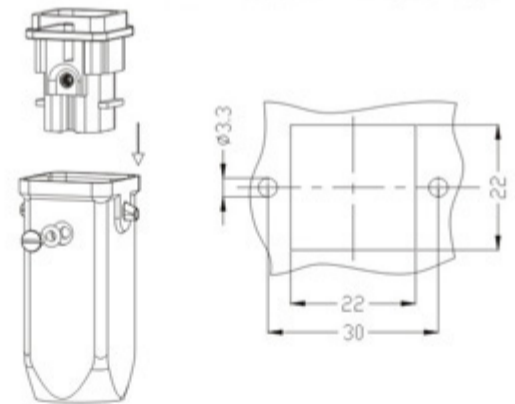
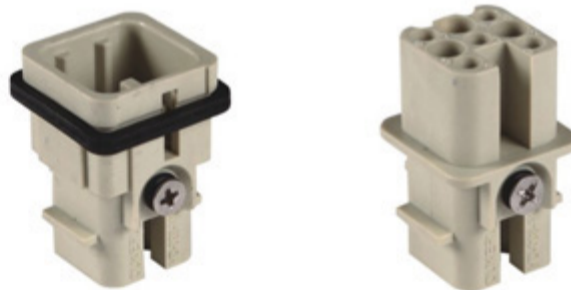
Note: 10A Crimp contact pins should order separately, please refer to page 111

Hzw-HD

Insert -120V/~50V 10A

Number of contacts

8



TYPE
Part number
Hoods/Housings

HZW-HD-008-MC
61 204 008 411
Size HZW-H3A

HZW-HD-008-FC
61 204 008 412
Size HZW-H3A

Mounting example

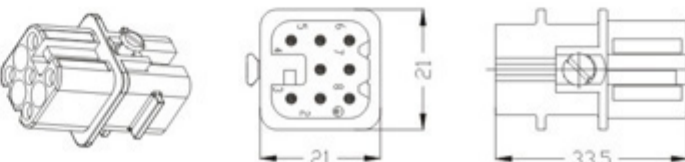
Panel cut out

Drawing (Dimensions in mm)

Male insert (MC)



Female insert (FC)



Crimp contacts	Wire gauge	D	Stripping length
Gold plated	0.14-0.37mm ²	AWG 26-22	0.90mm
	0.5mm ²	AWG 20	1.10mm
	0.75mm ²	AWG 18	1.30mm
Silver plated	1.0mm ²	AWG 18	1.45mm
	1.5mm ²	AWG 16	1.75mm
	2.5mm ²	AWG 14	2.25mm

Note: Suit hood/housings:Size H3A

Note: 10A Crimp contact pins should order separately, please refer to page 111

Hood/Housing detail on "Hood/Housing" section

Hzw-HD

Insert 250V 10A

Number of contacts

15,25,40,64 + ⊕

HD



TYPE
Part number
Hoods/Housings

HZW-HD-015-MC
61 204 015 421
Size HZW-HI0A

HZW-HD-015-FC
61 204 015 422
Size HZW-HI0A

HZW-HD-025-MC
61 204 025 431
Size HZW-HI6A

HZW-HD-025-FC
61 204 025 432
Size HZW-HI6A



TYPE
Part number
Hoods/Housings

HZW-HD-040-MC
61 204 040 441
Size HZW-HI6B

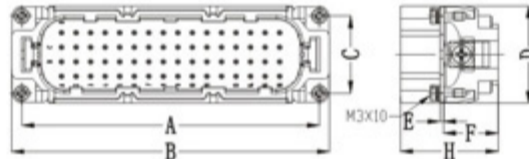
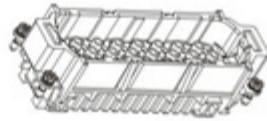
HZW-HD-040-FC
61 204 040 442
Size HZW-HI6B

HZW-HD-064-MC
61 204 064 451
Size HZW-H24B

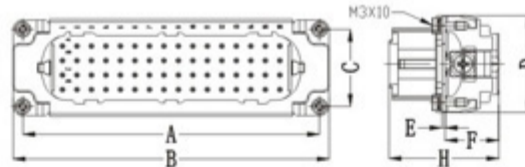
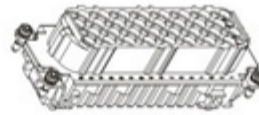
HZW-HD-064-FC
61 204 064 452
Size HZW-H24B

Drawing (Dimensions in mm)

Male insert (MC)



Female insert (FC)



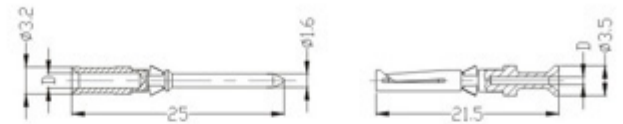
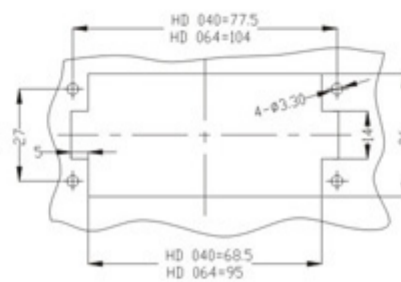
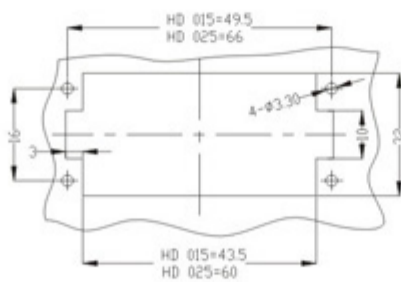
Male insert(M)

number of contacts	A	B	C	D	E	F	H
HZW-HD-015	49.5	56.5	16	22.8	1	14	33
HZW-HD-025	66	73	16	22.8	1	14.8	34
HZW-HD-040	77.5	84.5	27	34	1.2	19	34
HZW-HD-064	104	111	27	34	1.2	19	36

Female insert(F)

number of contacts	A	B	C	D	E	F	H
HZW-HD-015	49.5	56.5	16	22.8	1	14.5	33.2
HZW-HD-025	66	73	16	22.8	1	15.5	34
HZW-HD-040	77.5	84.5	27	34	1.2	16.8	37.2
HZW-HD-064	104	111	27	34	1.2	19	38.5

Panel cut out



Crimp contacts	Wire gauge	D	Stripping length
Gold plated	0.14-0.37mm ²	AWG 26-22	0.90mm 8mm
	0.5mm ²	AWG 20	1.10mm 8mm
	0.75mm ²	AWG 18	1.30mm 8mm
Silver plated	1.0mm ²	AWG 18	1.45mm 8mm
	1.5mm ²	AWG 16	1.75mm 8mm
	2.5mm ²	AWG 14	2.25mm 6mm

Note: Suit hood/housings:Size HI0A,HI6A,HI6B,H24B

Hood/Housing detail on "Hood/Housing" section

Note: 10A Crimp contact pins should order separately, please refer to page 111

Hzw-HD

Insert 250V 10A

Number of contacts

50,80,128+



TYPE
Part number
Hoods/Housings

HZW-HD-050-MC
61 204 050 461
Size HZW-H32A

HZW-HD-050-FC
61 204 050 462
Size HZW-H32A

HZW-HD-080-MC
61 204 080 471
Size HZW-H32B



TYPE
Part number
Hoods/Housings

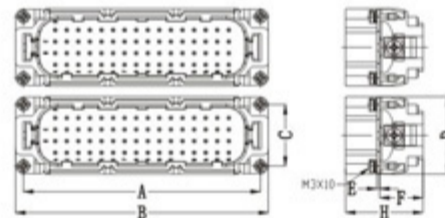
HZW-HD-080-FC
61 204 080 472
Size HZW-H32B

HZW-HD-128-MC
61 204 128 481
Size HZW-H48B

HZW-HD-128-FC
61 204 128 482
Size HZW-H48B

Drawing (Dimensions in mm)

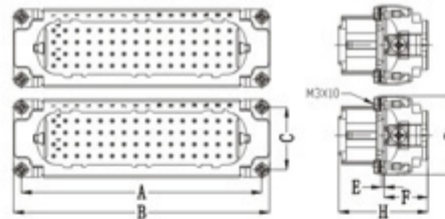
Male insert(MC)



Male insert(M)

number of contacts	A	B	C	D	E	F	H
HZW-HD-050	66	73	16	22.8	1	14.8	34
HZW-HD-080	77.5	84.5	27	34	1.2	19	37
HZW-HD-128	104	111	27	34	1.2	19	36

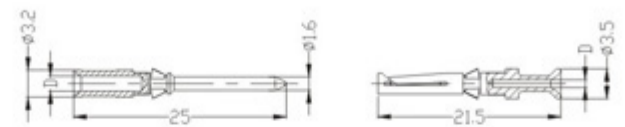
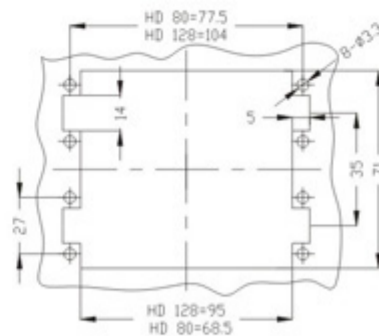
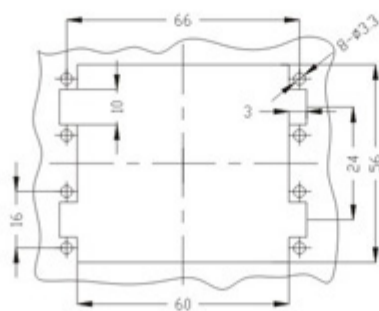
Female insert (FC)



Female insert(F)

number of contacts	A	B	C	D	E	F	H
HZW-HD-050	66	73	16	22.8	1	15.5	34
HZW-HD-080	77.5	84.5	27	34	1.2	16.8	37.2
HZW-HD-128	104	111	27	34	1.2	19	38.5

Panel cut out



Crimp contacts	Wire gauge	D	Stripping length
Gold plated	0.14-0.37mm ²	AWG 26-22	0.90mm
	0.5mm ²	AWG 20	1.10mm
	0.75mm ²	AWG 18	1.30mm
Silver plated	1.0mm ²	AWG 18	1.45mm
	1.5mm ²	AWG 16	1.75mm
	2.5mm ²	AWG 14	2.25mm

Note: Hood/Housing detail on "Hood/Housing" section

Note: 10A Crimp contact pins should order separately, please refer to page 111